



G50B

484cc

Two-Cylinder/Air-Cooled/Two-Stroke Engine
45.5 HP @ 7000 RPM

CONTENTS

	PAGE
CYLINDER	2
CRANK CASE	4
FAN COVER & COOLING FAN	6
PISTON & CRANK SHAFT	8
IGNITION SYSTEM	10
RECOIL STARTER	13
STARTER MOTOR	14

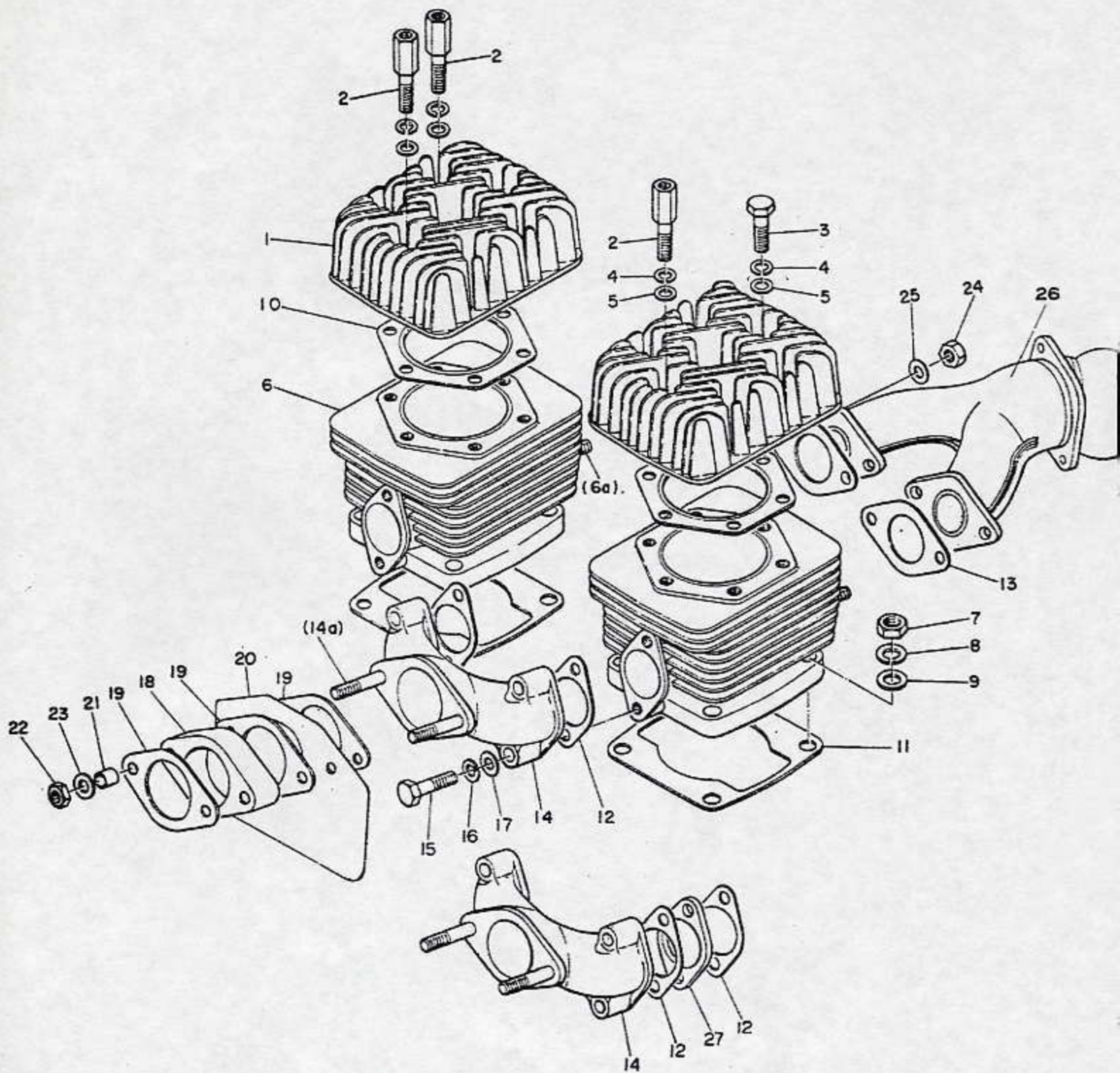


FIG. NO.	DESCRIPTION	CHAPARRAL NO.	G50B
1	CYLINDER HEAD	79300	2
2	BOLT, cylinder head	79301	3
3	BOLT	79302	9
4	SPRING WASHER	78003	12
5	WASHER	78004	12
6	CYLINDER, comp.	79304	2
6a	STUD, exhaust	78161	(4)
7	NUT, cylinder	78440	8
8	SPRING WASHER	78011	8
9	WASHER	78012	6
10	GASKET, cylinder head	79003	2
11	GASKET, cylinder base	78576	2
		78445	
12	GASKET, inlet manifold	78169	4
13	GASKET, exhaust	78170	2
14	INLET MANIFOLD, comp.	79307	1
14a	STUD, inlet	78162	(2)
15	BOLT	79555	4
16	SPRING WASHER	78003	4
17	WASHER	78004	4
18	INSULATOR	79310	1
19	GASKET, carburetor	79311	3
20	BAFFLE PLATE	79312	1
21	PIPE	78022	2
22	NUT	78002	2
23	WASHER	78004	2
24	WASHER	78002	4
25	NUT	78004	4
26	EXHAUST MANIFOLD	51287-1	1
27	INSULATOR, inlet manifold	51696	2

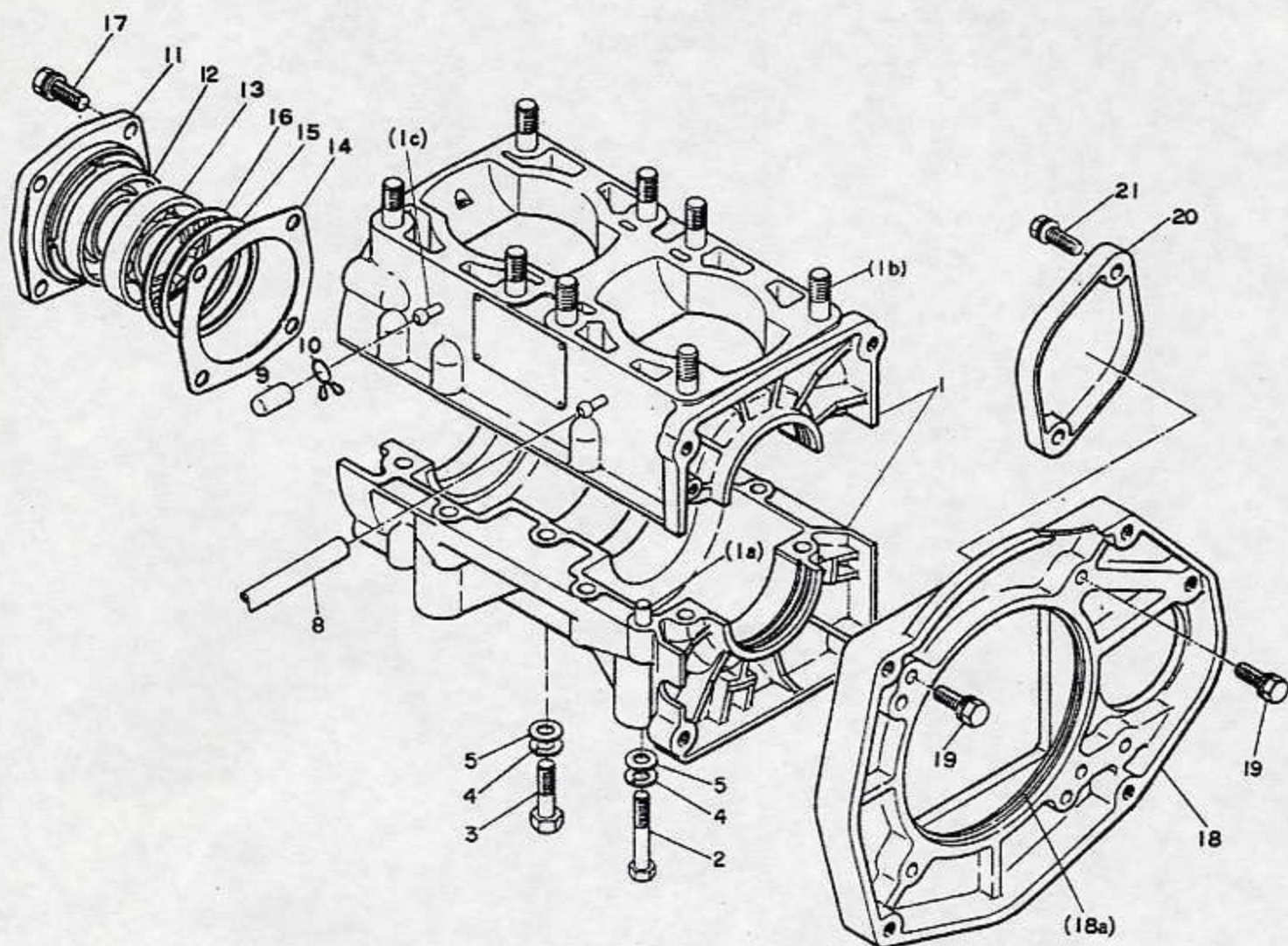


FIG. NO.	DESCRIPTION	CHAPARRAL NO.	G50B
1	CRANK CASE, comp.	100302	1
1a	DOWEL PIN	78028	(2)
1b	STUD, cylinder	78029	(8)
1c	NIPPLE	78463	(2)
2	BOLT	78030	4
3	BOLT	78032	8
4	SPRING WASHER	78003	10
5	WASHER	78004	10
8	PULSE PIPE	78923	1
9	PLUG, nipple	78467	1
10	CLIP	78924	1
11	BEARING RETAINER	78587	1
12	OIL SEAL	78043	1
13	BALL BEARING	78082	1
14	GASKET, bearing retainer	78044	1
15	THRUST PLATE	79648	1
16	SHIM, crankshaft 0.2t	79650	0-2
	0.3t	78591	0-2
17	BOLT	78925	4
18	MAGNETO CASE	79325	1
19	BOLT	79007	4
20	COVER	78212	1
21	BOLT	78925	2

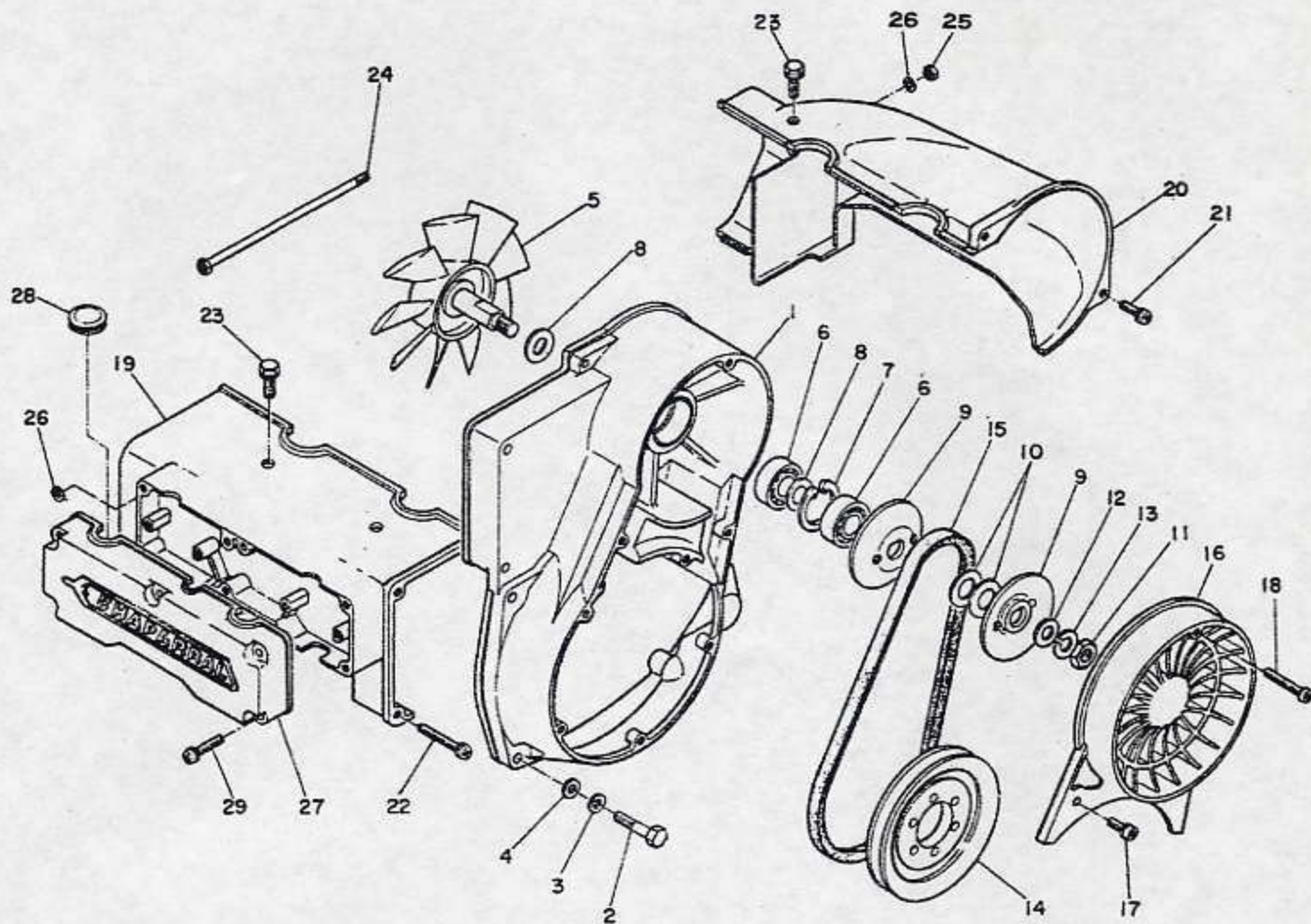


FIG. NO.	DESCRIPTION	CHAPARRAL NO.	G50B
1	FAN COVER	78279	1
2	BOLT	78280	4
3	SPRING WASHER	78003	4
4	WASHER	78004	4
5	COOLING FAN, comp.	78926	1
6	BALL BEARING	78284	2
7	SNAP RING	78285	1
8	SPACER	78286	2
9	PULLEY, driven	78927	2
10	SHIM	78488	4-5
		79331	1
11	NUT	78290	1
12	WASHER	78291	1
13	SPRING WASHER	78292	1
14	PULLEY, drive	78491	1
15	V BELT	78294	1
16	FAN GUARD	78295	1
17	SCREW	78145	2
18	SCREW	78297	1
19	CYLINDER COVER, carburetor side	78599	1
20	CYLINDER COVER, exhat side	78299	1
21	SCREW	78300	2
22	SCREW	78122	2
23	BOLT	78302	3
24	BOLT, cylinder cover	79332	1
25	NUT	78304	1
26	WASHER	78305	2
27	IGNITION COIL COVER	78504	1
28	PLUG	78506	1
29	SCREW	78307	5

8 ————— PISTON & CRANK SHAFT

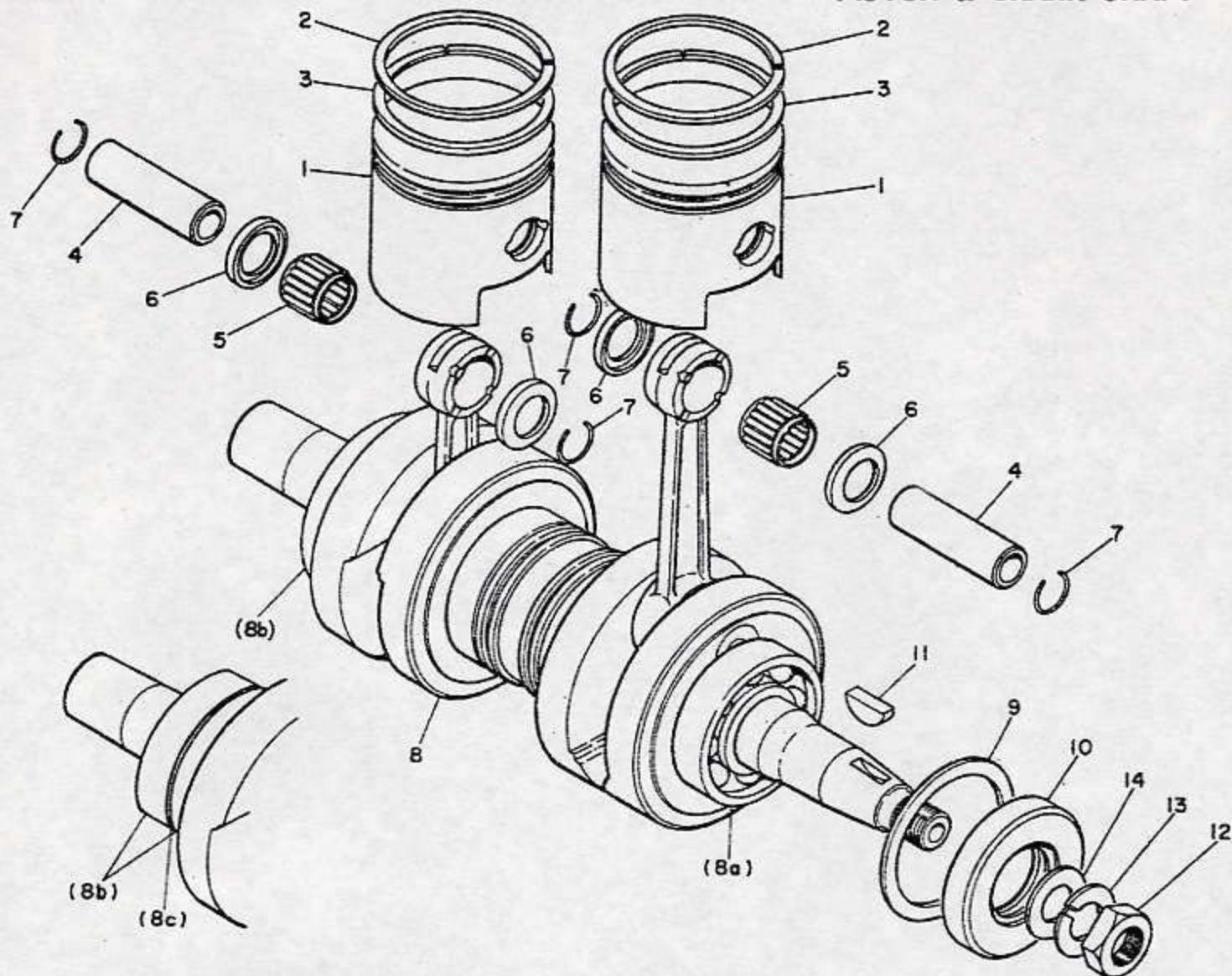


FIG. NO.	DESCRIPTION	CHAPARRAL NO.	G50B
1	PISTON (STD)	79022	2
	PISTON (0.5mm)	79023	2
	PISTON (1.0mm)	79024	2
2	PISTON RING, TOP (STD)	79025	2
	PISTON RING, TOP (0.5mm)	79026	2

FIG. NO.	DESCRIPTION	CHAPARRAL NO.	G50B
	PISTON RING, TOP (1.0mm)	79027	2
3	PISTON RING, BOTTOM (STD)	79028	2
	PISTON RING, BOTTOM (0.5mm)	79029	2
	PISTON RING, BOTTOM (1.0mm)	79030	2
4	PISTON PIN	79031	2
5	NEEDLE BEARING, piston pin	79344	2
6	THRUST WASHER	79345	4
7	SNAP RING, piston pin		
		78625	4
8	CRANK SHAFT, comp.	79347	1
8a	BALL BEARING, magneto side	78082	(1)
8b	BALL BEARING, PTO side	78083	(1)
8c	SPACER		
9	STOP RING	78085	1
10	OIL SEAL, magneto side	78042	1
11	KEY, magneto side	78087	1
12	KEY, magneto <i>NUT</i>	78088	1
13	<i>NUT WASHER</i>	78089	1
14	PISTON (STD) <i>WASHER</i>	78090	1

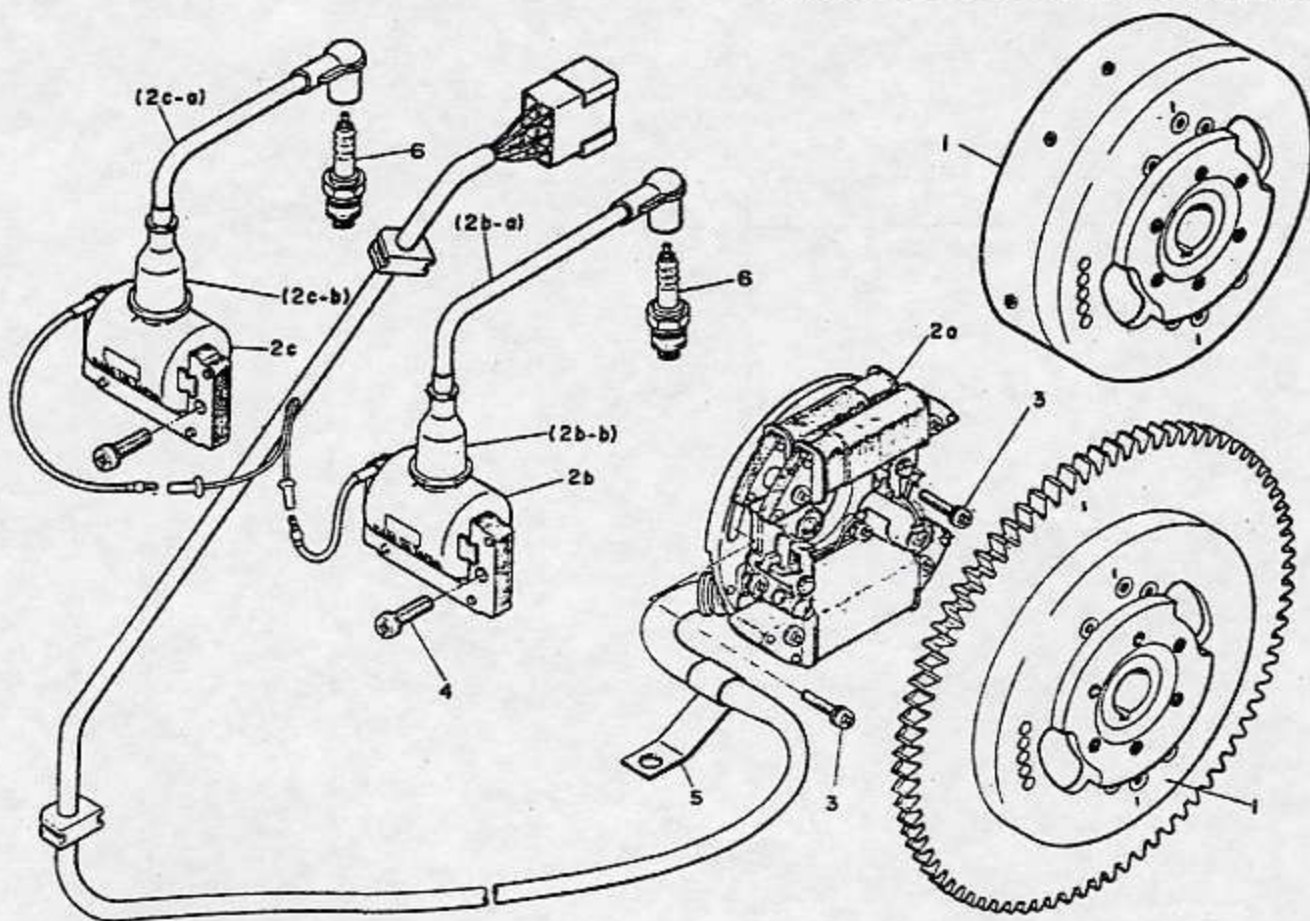


FIG. NO.	DESCRIPTION	CHAPARRAL NO.	G50B
	IGNITION SYSTEM. W/T RING GEAR	78628	1 set
1	FLYWHEEL. W/T RING GEAR. ASSY	79352	1
2	MAGNETO. ASSY	79356	1
2a	COIL PLATE. ASSY	78557	(1)
2b	IGNITION COIL. NO1. ASSY	79358	(1)
2c	IGNITION COIL. NO2. ASSY	79359	(1)
2b-a			
2c-a	IGNITION CORD. W/T PLUG CAP	78949	(2)
2b-b			
2c-b	CAP. ignition coil	78137	(2)
3	SCREW	78933	2
4	SCREW	78142	4
	CLAMP	78147	1
	SPARK PLUG		2

IGNITION SYSTEM (STANDARD MODEL) - (2)

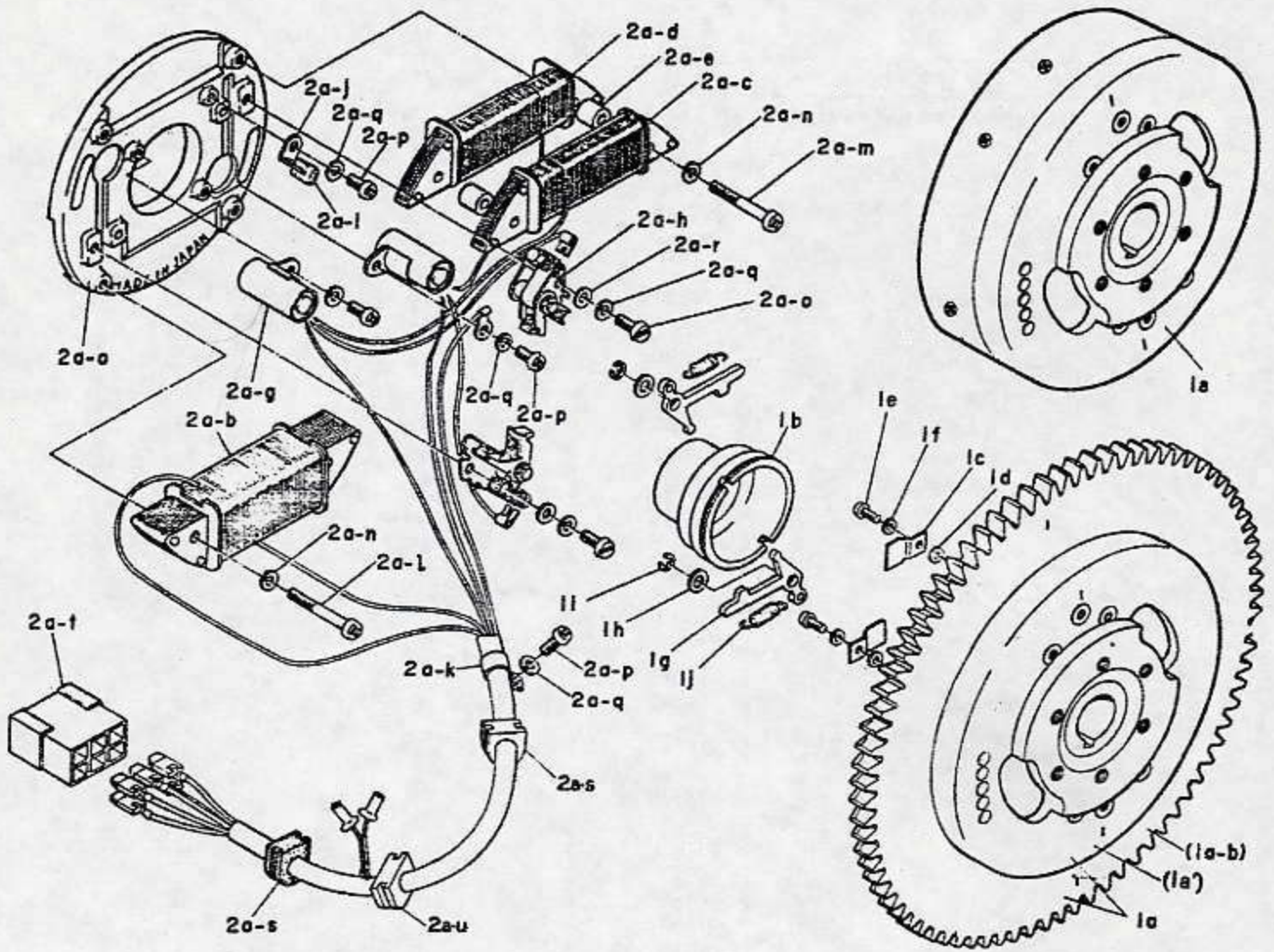


FIG. NO.	DESCRIPTION	CHAPARRAL NO.	Q50B
	FLYWHEEL W/T RING GEAR, ASSY	(78629)	0
1a	FLYWHEEL W/T RING GEAR, comp.	78138	1
1a	FLY WHEEL	78547	(1)
1a			
1a-b	RING GEAR	78361	(1)
1b	CAM	78362	1
1c	CAM STOPPER	78549	2
1d	WASHER	78364	2-4
1e	SCREW	78365	2
1f	SPRING WASHER	78366	2
1g	GOVERNOR WEIGHT	78553	2
1h	WASHER	78364	2-4
1i	SNAP RING	78369	2
1j	GOVERNOR SPRING	79365	2
	COIL PLATE, ASSY	(78557)	0
2a-a	COIL PLATE	78641	1
2a-b	LIGHTING COIL	78642	1
2a-c	EXCITING COIL, NO.1	78374	1
2a-d	EXCITING COIL, NO.2	78375	1
2a-e	SPACER	78376	2
2a-g	CONDENSER	78378	2
2a-h	CONTACT BREAKER	78379	2
2a-i	OIL FELT	78380	1
2a-j	HOLDER, oil felt	78381	1
2a-k	CLAMP	78382	1
2a-l	SCREW lighting coil	78652	2
2a-m	SCREW, exciting coil	78384	2
2a-n	SPRING WASHER	78385	4
2a-o	SCREW, contact breaker	78386	2
2a-p	SCREW	78387	4
2a-q	SPRING WASHER	78366	6
2a-r	WASHER	78389	2
2a-s	GROMMET A	78390	2
2a-t	COUPLER	78391	1
2a-u	GROMMET B	78660	1
	CONNECTOR HOUSING 41453		MATES w/ 78391

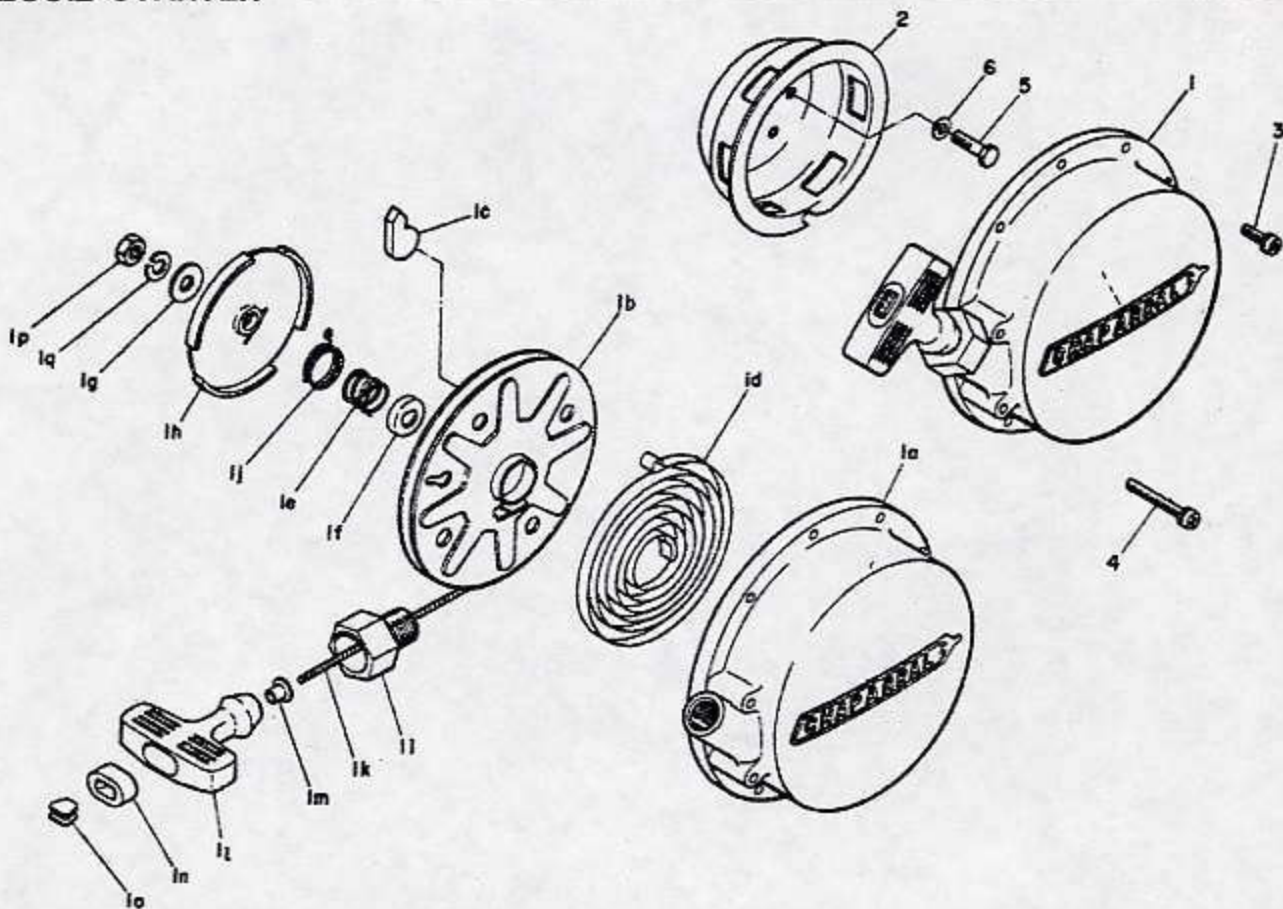


FIG. NO.	DESCRIPTION	CHAPARRAL NO.	G50B
	RECOIL STARTER, Assy.	79366	1 set
1	RECOIL, Assy.	79367	1
1a	RECOIL COVER	79368	(1)
1b	REEL	78104	(1)
1c	RACHET	78105	(3)
1d	SPIL SPRING	78106	(1)
1e	FRICTION SPRING	78101	(1)
1f	WASHER	78108	(1)
1g	THRUST WASHER	78109	(1)
1h	FRICTION PLATE	78110	(1)
1i	ROPE GUIDE, case	78111	(1)
1j	RETURN SPRING	78112	(1)
1k	WIRE ROPE	78113	(1)
1l	HANDLE	78114	(1)
1m	ROPE GUIDE, handle	78115	(1)
1n	ROPE STOPPER, A	78116	(1)
1o	ROPE STOPPER, B	78117	(1)
1p	NUT	78118	(1)
1q	SPRING WASHER	78119	(1)
2	STARTER PULLY	78120	1
3	SCREW	78121	4
4	SCREW	78122	1
5	BOLT	78682	6
6	SPRING WASHER	78124	6

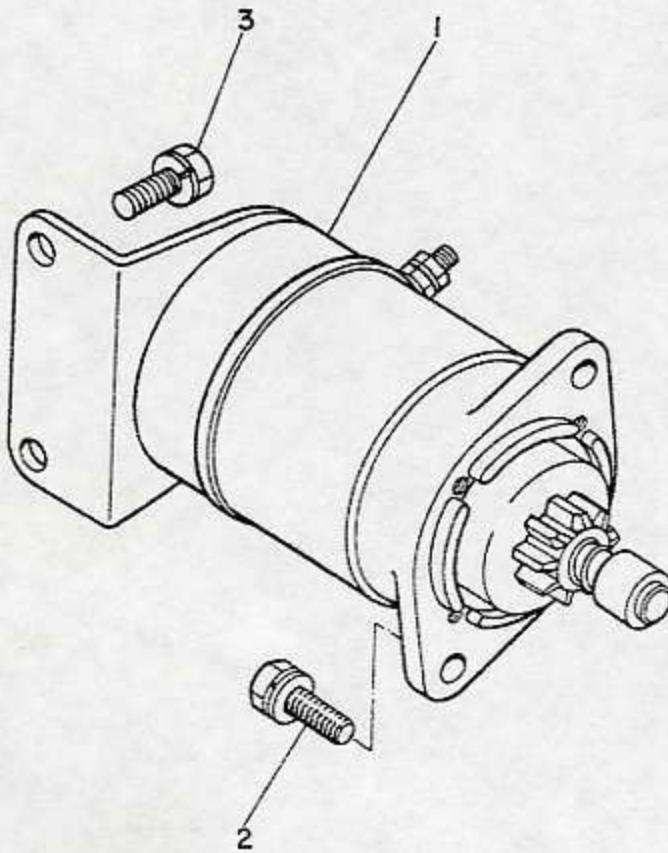


FIG. NO.	DESCRIPTION	CHAPARRAL NO.	G50B
1	STARTER MOTOR. Assy	78416	1
2	BOLT	78925	2
3	BOLT	78420	2